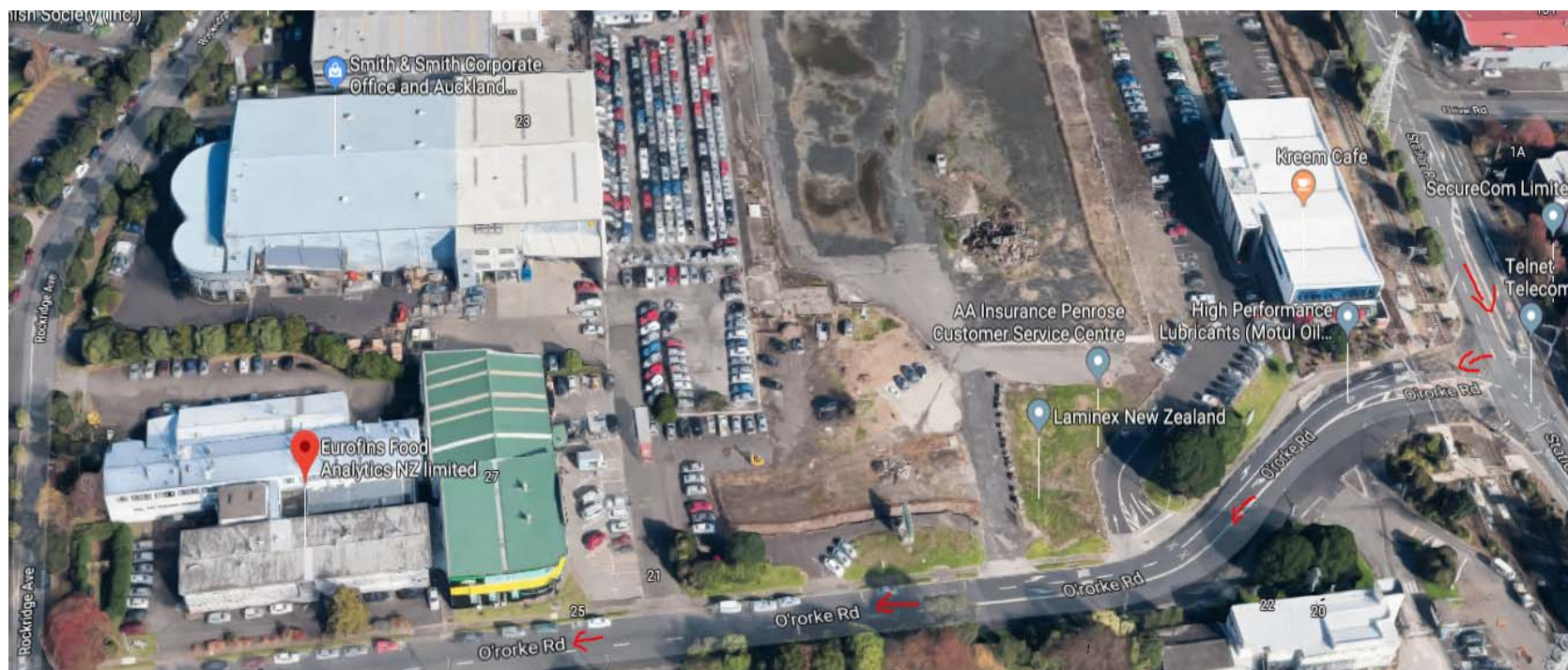


## Eurofins Visitor Information for Auckland Environment Laboratory

### Directions

Our lab is located at the Stadium Business Park in Penrose at 35 O'Rorke Rd.

If arriving from the north, from Station Rd turn right onto O'Rorke road, crossing the railway line. Continue following O'Rorke Road until reaching number 35 on the right side of the street.



**Main Building**



**Sample Reception**



Our Sample Reception is located behind the main building accessible on the first right off Rockridge Ave.  
If simply delivering samples, please use the Sample Receipt window at the back of the building off Rockridge Ave.

## **Parking**

Parking on the street is free and time unlimited. Visitors are also welcome to park in the visitor carpark at the front of the building.

## **General Information**

Unless simply dropping off samples to our Sample Receipt, all visitors to our site must sign-in using our Visitors log book located in the reception area at the front of the building. Please call 09 526 45 51 or 09 579 2669 if reception or Sample Reception is unattended.

This site contains three separate Eurofins laboratory divisions, so please mention who you are here to see or that you are visiting *Eurofins Environment Testing*.

Lastly, our Eurofins site is a laboratory, so please remember if you are venturing beyond Reception or Administration areas then you will need to wear enclosed shoes. We are able to provide safety glasses and a visitor lab coat.

We look forward to your visit.

*Eurofins Management & Staff*