

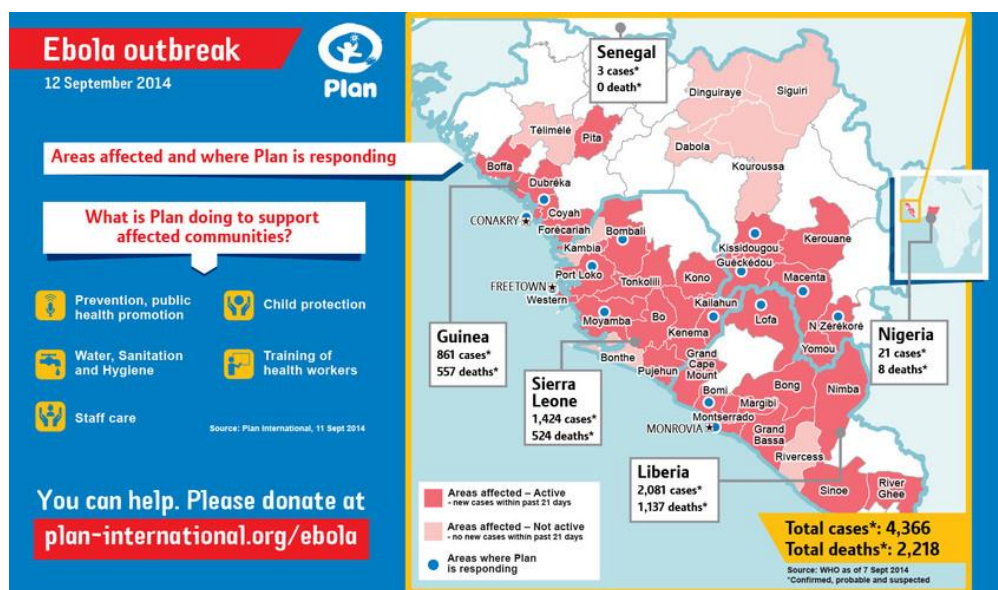
EBOLA RESPONSE IN WEST AFRICA



EBOLA EMERGENCY – 19/9/2014 West Africa: Guinea, Liberia and Sierra Leone

1. Current situation

The Ebola virus epidemic is still spreading throughout West Africa. There are currently confirmed cases in Guinea, Sierra Leone, Liberia, Nigeria, Senegal and the Democratic Republic of Congo. The three countries where transmission is both more widespread and strongest – **Guinea**, **Liberia** and **Sierra Leone** – total 4,366 cases of Ebola (probable, suspected and confirmed), of which 2,218 deaths.



2. PLAN's line of action and response to the Ebola crisis

Guinea

- ❖ PLAN has been working in Guinea since 1989, helping more than 34,000 children in 50 communities throughout the country. Plan Guinea works more specifically towards reducing the number of children dropping out of school and helping youths, who are too old, to register in schools or find jobs by supplying them with scholar and professional tools aimed at helping them to develop their professional project.
- ❖ PLAN still has on-going activities in raising community awareness and public health information campaigns and networking. PLAN is stepping up its response and will be a key player in the World Food Programme, for which it has already been entrusted with the distribution of 9,500 tons of food supplies over the next four months within the communities concerned.

Liberia

- ❖ PLAN has been in Liberia since 1982 helping children living in great poverty.
Plan Liberia works more specifically to sustain the growth, development and well-being of the children affected by war situations in the 77 communities spread across Liberia.
- ❖ Plan Liberia responded to the government's call for development partners to support the Social Affairs and Health Department on technical and logistical support issues, in order to continue fighting against the Ebola virus, which has affected all spheres in the country.
Plan Liberia has donated three vehicles to the Social affairs and health Departments in order to strengthen the logistical capacities of the national Ebola work group. 150 volunteers will shortly be trained in networking and raising awareness and extending the isolation unit in order to take in more patients.

Sierra Leone

- ❖ PLAN has been working in Sierra Leone since 1976 and has been implementing programmes for the benefit of 7,000 children in 1,126 communities throughout the country.
Plan Sierra Leone is concentrating its efforts on fighting against malaria, as the country has one of the highest infant mortality rates in the world, 70 % of which are the result of illness.
- ❖ Plan Sierra Leone is maintaining its efforts to work alongside the Health Department, the sanitation teams involved (health district management), and the Ministry of Youth (National Youth Committee) on all Ebola epidemic issues. PLAN's Sierra Leone team is responsible for the follow-up (a) support given to the district, (b) of raising awareness and (c) of dispatching the 1,900 hand-washing facilities to the Bombali, Kenema, Kailahun, Moyamba communities, and Port Loko districts. This is our standard response in all of our program units. It is also a follow-up we carry out overall within PLAN's program units.

Integrated PLAN and IMC program (International Medical Corps is a worldwide non-profit humanitarian organization dedicated to saving lives and relieving suffering through aid programs and developing health care training) :

- Health prevention, promotion of public health and risk curbing measures
- Care and treatment for children and adults infected and at risk
- Training and reinforcement of capabilities
- Psychosocial and mental health support
- Care and treatment of nursing staff
- Advanced training and preparation of trainers
- Child protection
- Analysis of negative impacts on food safety, nutrition and socio-economic issues
- Prevention and response to separating families

This integrated program was designed and implemented thanks to the collaboration between PLAN and International Medical Corps. It relies on PLAN's existing capabilities and current response (including raising awareness, promotion of prevention and public health) and that of IMC's (case management, training and the reinforcement of health staff capabilities in hemorrhagic viral epidemics such as Ebola).

3. Funding required : USD 850,000SD

Country	Total Funding Required (USD)	Funding confirmed (USD)	Total Funding Gap (USD)
Liberia	505,000	315,000	190,000
Sierra Leone	663, 969	256,910	407,059
Guinea	794,182	655, 482	138, 700
TOTAL	1,963,151	1,013,162	849, 989

With a contribution, Eurofins could, for instance, contribute to the following actions:

- Broadcast messages raising awareness on local radios
- Disinfecting solutions
- Hand-washing facility kits
- Petrol costs linked to supervision of actions