

Test Automation for Smart TVs

Viewers are becoming increasingly demanding when it comes to consuming content. They want to see their favorite content on any device and at any time. The use of apps on Smart TV's is one of these, along with OTT (Over-the-Top) platforms which have experienced a massive growth over the years.

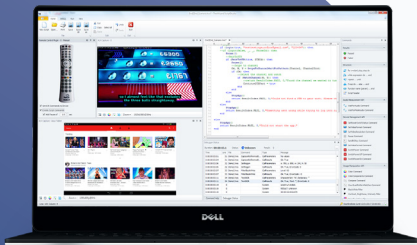
To stay ahead of the game in constantly delivering an outstanding user experience, it is essential to have a good QA strategy. However, due to some technical limitations, testing Smart TVs is currently excluded from traditional test automation techniques and testing is mainly performed manually. This leads to longer testing processes and a lower accuracy in test results.

Use of testwizrd to Test Automate any Smart TV

Eurofins Digital Testing has developed its highly-regarded test automation platform - testwizrd - to test any Smart TVs, using the same principles as used for any other HDMI-connected device.

This testwizrd extension provides enhanced image compare algorithms, which are successful in detecting small changes in lighting, positioning, sharpness or color shift.

The solution is device agnostic, and can be used to implement test automation scripts on TV sets with different operating systems, sizes and configurations.



Advantages

- ✔ The testwizrd test automation platform now delivers an even more comprehensive list of testing features
- ✔ End-to-end testing of any media platform: OTT, Set-Top Box, Web, Mobile or IoT Device
- ✔ Independent of (Smart) TV Operating Systems or screen sizes
- ✔ Handles Video & Audio Playback
- ✔ Can be used for remote testing
- ✔ Tests the core TV system - not just the apps