

SAMPLING AND SHIPPING INSTRUCTIONS

Radon

Please read all the instructions before sampling.

Before Sampling

Check sampling kit for the following:

- Green hose coupler
- Tygon hose (clear and colorless)
- 2 Sample vials for each sample point
- Chain of Custody (COC)
- If any of the above are missing, contact the laboratory immediately and do not attempt to collect the sample.
- Fill the provided bag(s) with wet ice and seal. Keep the ice bag(s) or blue ice packs (if provided) **frozen**.



Sampling

1. Disconnect aerators from the faucet that the samples are being taken from.
2. Flush the sample line for at least 10 minutes prior to collecting the sample.
3. After flushing, shut off the water flow and connect the green hose coupler to the faucet.
4. Flush for 5 minutes.



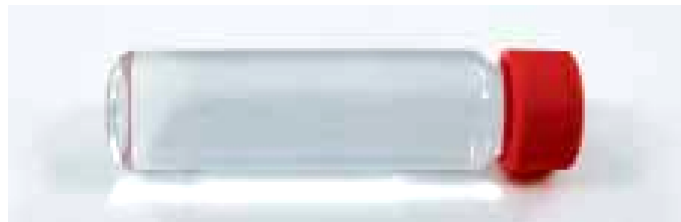
SAMPLING AND SHIPPING INSTRUCTIONS

Radon

5. Uncap the sample vial and place it into the bottom of a large glass pitcher or bucket.
6. Place the clear tygon sampling hose into the sampling vial.
7. Allow the sample vial to fill and overflow.
8. Allow the vial to overflow until it is covered in pitcher/bucket by several inches of water. The pitcher/bucket may be allowed to overflow as shown.
9. Remove the hose from the vial and cap the vial while still underwater, if possible.
10. Inspect the sample for air bubbles. If bubbles exist, discard the water in the sample vial and start over.
11. Two vials should be collected from each sampling point.
12. Indicate sampling date, time, site and name of sampler on both the vial labels and the enclosed Chain of Custody. Be as specific as possible when describing the collection site.



This sample has an air bubble and should be emptied and refilled.



A good sample with no air bubbles.

Shipping Instructions

- In the following order, place samples, bags of wet ice, frozen blue refrigerant packs (if provided), and green hose coupler, with Chain of Custody (in the zip lock bag provided) into shipping container and return to the lab **immediately** after collection.
- Samples must be hand delivered or sent by an **overnight courier. Alert the laboratory about incoming samples.**
- **Do not** sample or ship on Friday, Saturday, or Sunday.

Note: If radon test is ordered with other tests, the sealed radon sample cooler can be returned separately or put inside the larger sample cooler or box.