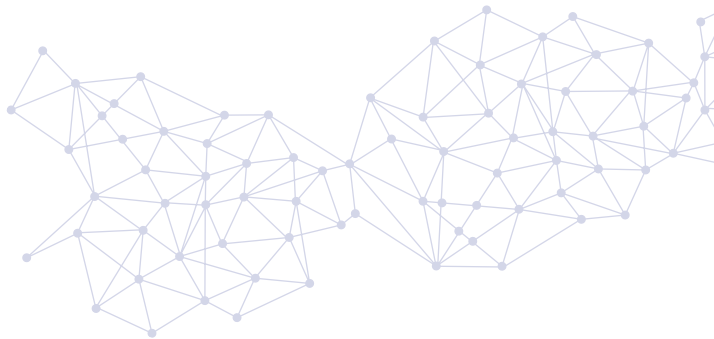




Focus on

Specialised Pathology for Women



Focus on Specialised Pathology for Women



Pregnancy follow-up, screening & prenatal diagnostics

	Biomnis Code
Toxoplasmosis: serology - avidity	TOXO, TOXAV
Rubella: serology - avidity	RUBEO, RUBEM, RUBAV
Cytomegalovirus: serology - avidity	CMV, CMVAV
Varicella: IgG/IgM serology	VARZO
Parvovirus B19: IgG/IgM serology	PARV
HBs antigen: qualitative - neutralisation if positive	HBSAG
Irregular agglutinins: screening, identification, titration	RAI
Non-invasive prenatal screening	
Down's syndrome screening	▲
Ninolia NIPT - Non Invasive Prenatal Testing of T21, T18 and T13	DPNI
1 st and 2 nd Trimester Pre-eclampsia Screening	PECLA, TPREE
RhD genotyping on circulating foetal DNA	GRHDF
Invasive prenatal screening	
Screening for congenital diseases using karyotypes, SNP-array, FISH and QF-PCR	▲
Genetic diagnosis of rare diseases	▲
AFP and acetylcholinesterase assay	AFPLA, ACOLA



Medically Assisted Procreation (MAP)

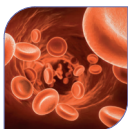
Ovarian reserve evaluation	
AMH	AMH
Estradiol	E2F
FSH	FSH
Premature ovarian failure	
21 hydroxylase antibodies	21OH
Thyroid peroxidase antibodies	TPO
FMRA gene mutation (fragile X)	XFRA
Karyotype	CSG

Biomnis Code: This is the test code used to identify the test parameter. It is strongly advised to use these codes on your request forms, for searches in our online test guide and when in communication with Eurofins Biomnis.

▲: Several codes exist and depend on the indication and/or sample type. Please refer to our test guide.

●: These tests are also carried out in our miscarriage investigation panels.

*Non-exhaustive list



Thrombosis profile

Biomnis Code

Combined estrogen-progestogen contraceptives and risk of thrombosis (for cases with a personal or family medical history)

Antithrombin: activity	AT3C
Protein C: activity	PC
Protein S: activity	PS
Factor II G20210A gene mutation	F2M
Factor V gene mutation (V Leiden)	F5L
Homocysteine (not recommended as first-line test)	HOCY, HOCYU
Lupus anticoagulant	ACC
Anti-beta 2 glycoprotein 1 IgG and IgM antibodies	B2GPI, B2GPM
Anti-cardiolipin IgG and IgM antibodies	CARD, CARDM
Factor VIII (not recommended as first-line test)	▲

Hemorrhagic Diseases

Willebrand Disease	▲
Factor deficiencies and Hemophilia	▲



Oncology

Biomnis Code

Screening for cervical tumours

Cervical and vaginal smear	MFR
Papillomavirus/HPV oncogenic test	HPV
SCC antigen - TA4 - serum	SCC

Screening for breast tumours

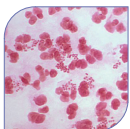
Hormonal receptors	PATHO
Over-expression of HER2 c-erbB-2 protein	ERBB2
HER2 amplification	MOHCY5
CA15-3 serum	CA153
Prosigna® Prognostic Gene Signature Assay	PAM50
BRCA 1 & 2	Coming soon...

Screening for ovarian tumours

CA125 serum	CA125
HE4, ROMA Calculation	HE4
BRCA 1 & 2	Coming soon...

Screening for gestational trophoblastic tumours

hCG and free beta chain	BHCG, HCGT, HCG
-------------------------	-----------------



Sexually transmitted diseases

	Biomnis Code
<i>Chlamydia trachomatis</i>	▲
<i>Neisseria Gonorrhoeae</i>	NGOBM
<i>Trichomonas vaginalis</i>	CBPV
<i>Gardnerella vaginalis</i>	CBPV
Genital mycoplasmas	MYCGE
Herpes virus	▲
Vaginosis panels/STD	Coming soon...



Menopausal, hormonal and phosphate/calcium profile

	Biomnis Code
Gonadotropins: LH, FSH, female estradiol, progesterone	▲
Prolactin	PROL, TMP494
Testosterone (RIA)	TEF, TBEF
Delta-4 androstenedione (RIA)	D4
17-hydroxyprogesterone (RIA)	17OHP
DHA sulfate	SDHA
<i>Sex Hormone Binding Globulin</i>	TEBG
Estrone (RIA)	E1CH
Vitamin 25-D	25D
Vitamin D - 25-OH (Vitamin D3 + D2)- LCMSMS method	VDLC
PTH-Intact parathormone	PTH
Osteocalcin	OSTEO
Bone-alkaline phosphatase	PALO
CTX: cross laps	CROSS, CROSU
NTX: cross-linked N-telopeptide of type I collagen	NTX
P1NP: amino-terminal propeptide of type I collagen	P1NP

All of the information you need for these tests can be found in our online test guide.

A search by test name or Biomnis code will give you access to useful information such as: Clinical interest, Preanalytical details, Test method, Turnaround times, Contact details for the pathologists in charge...

Please visit www.eurofins-biomnis.ie > Test Guide

Eurofins Biomnis offers comprehensive monitoring and diagnostic assays to women which encompass all key periods of their biological existence: menstrual problems, pathologies for sexually active women, screening and diagnosis of womens' cancers, pregnancy follow-up, accompanying women from pre-conception to birth, menopause monitoring, ...

Test ranges which cover all specialities of pathology

- Reproductive pathology
- Prenatal genetics and cytogenetics
- Monitoring of maternal-fetal alloimmunisation
- Fetal biochemistry
- T21 screening by maternal serum markers and by non-invasive method (Ninalia NIPT)
- Prenatal Infectiology
- Pre-eclampsia
- Hormone testing
- Hemorrhagic and thrombotic risk
- Breast, ovarian, uterine, cervical cancers
- ...

Rely on our expertise

Our expert pathologists are committed to developing more innovative tests with greater performance and benefits for both women's health and the medical profession.

Our panorama of specialised tests dedicated to women's health is constantly revised and updated with new tests to optimise the prevention and diagnosis of women's pathologies.

About Eurofins Biomnis

European leader in specialised medical pathology, Eurofins Biomnis performs over 40,000 analyses per day with a repertoire of more than 3,000 test parameters. It has an established reputation for the development of novel, highly specialised assays and holds all of the necessary accreditations and certifications for the performance of these esoteric tests.

Strengthened by 120 years of expertise and innovation within the domain of medical pathology and European platform of the Clinical Diagnostics Division of the Eurofins Group, Eurofins Biomnis is now actively pursuing its International expansion.

Contact

Eurofins Biomnis

Three Rock Road, Sandyford Business Estate,
Dublin 18, Ireland
Phone: 01 295 8545
Email: sales@eurofins-biomnis.ie
www.eurofins-biomnis.ie



Biomnis