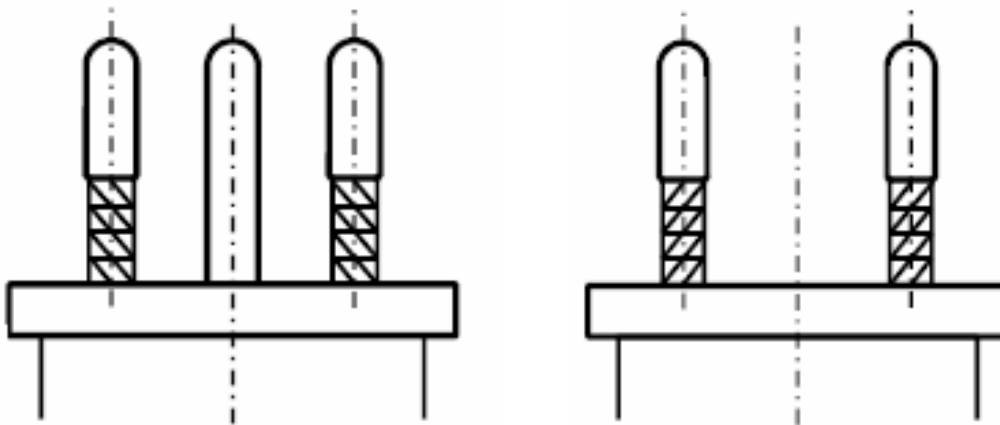


# Swiss Power Plugs



December/4/2009, the commission TK23B released the new standard edition SEV 1011:2009 for Swiss plugs, sockets and socket-outlets.

## What are the main differences?

- Swiss plugs type 11 and 12 have a new design. The most obvious difference is the introduction of insulating sleeves on pins of plug type 11 and 12. Refer to standard SEV 1011:2009 sheets SEV 6534-2 and SEV 6533-2.
- Plugs and sockets according to the old edition of SEV 1011:1991 can be tested and put onto the market until December/31/2012.
- Tests and market introduction according the new edition of SEV 1011:2009 can be done immediately.
- Standard sheets of the following plug and sockets have been revised: type 11, 12, 13, 21, 23, 15, 25.
- Socket type 12 according to SEV 1011, sheet 6534-1 will not be allowed to put on the market after December/31/2016.

The new, full edition of SEV 1011:2009 can be ordered at [www.normenshop.ch](http://www.normenshop.ch). Single standard sheets will not be sold anymore.

## Contact

Customer Center

T +41 58 220 32 00 | [CustomerCenter@eurofins.ch](mailto:CustomerCenter@eurofins.ch)