

# Your advantage .....our service

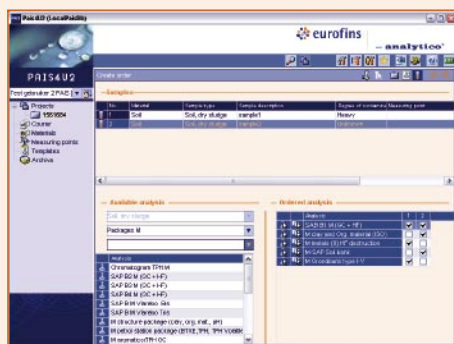
## ORDER: QUICK AND SIMPLE

Analysis orders can be sent from your office or directly from the field to our laboratories via the Internet or e-mail. Orders can also be registered through the most commonly accepted fieldwork program modules. Your orders are stored in logical sequence under the project. With the search and selection function, you can easily retrieve the project, the order and the sample of interest. Creating orders is very easy. You can use your personal favourites menu or fixed templates, saving you valuable time.



## RESULTS: DIRECT REPORTING

You can follow the progress of your orders on-line, 24 hours a day. Partial results will be sent to you immediately following validation in the laboratory. The official analysis certificate with watermark and signature will be forwarded to you digitally as a PDF file immediately following final validation. In PAIS 4U2 you can instantly compare the results against all commonly acceptable standard values, such as target and intervention values, Building Materials Decree, Vlarebo, your business-own standard values, etc.. Moreover, the results can be exported to Word and Excel with the option to convert them into XML/XSL. This allows you to easily adapt the report to the layout of your choose and requirements. The PAIS-XML format allows for information on orders and results to be exchanged between various users, and PAIS 4U2 also supports the SIKB-XML format, facilitating data exchange between various GIS and BIS systems. Further, PAIS 4U2 also supports the IBD exchange format.



## COST SPECIFICATION: CLEAR AND TRANSPARENT

PAIS 4U2 provides a detailed indication of the current rates for each analysis specification. By creating a test order, you can display a cost breakdown, which you can use in advance for planning your projects financially. This will save you time when preparing offers for customers and additionally prevents additional searching and calculation work, which usually is time-consuming, when using general price lists. PAIS 4U2 has all technical background information for all available analysis techniques and specifications. Furthermore, the exact composition of the various analysis packages can be displayed.



## SAMPLE TRANSPORT AND PACKAGING: WORLDWIDE SERVICES

Analytico cooperates with companies from more than 30 countries and receives samples from Stockholm to Cape Town and from Buenos Aires to Tokyo. For many multinationals, the laboratories of Analytico function as preferred vendors. For the handling of international transport Analytico has its own logistics department. Our personnel coordinate the transport of the correct empty packing material for our customers throughout the world. They also provide you with the necessary transport and customs documents required for the returning of the sample packages. From all over Europe the samples virtually always arrive at the laboratories of Analytico within 24 hours. The use of the transport boxes developed in-house by Analytico in combination with the special sample packing material minimises the risk of breakages during transport. The packaging box, in combination with the cooling elements, ensures that the right temperature is maintained during transport.



# How to get hold of PAIS 4U2?

The program is available on CD-ROM. To order the CD-ROM and your personal customer code and password, contact the Sales & Customer Services department at your local Analytico branch.

## PERSONAL SERVICE

Personal attention for our customers and their interests is at the centre of Analytico's management. If you need assistance with the installation of the program, one of our support specialists will drop by your place of business. We also provide free training for users. These instructions can take place in-house at your business location or at a nearby Analytico office. Our special PAIS Helpdesk is available to you for all your questions regarding the possibilities and the use of PAIS 4U2. You can, of course, also contact your personal account manager or project co-ordinator.

## FOR MORE INFORMATION OR ASSISTANCE: PAIS HELPDESK

Tel.: +31 (0)76 573 73 82 | Fax: +31 (0)76 573 77 77 | [pais.helpdesk@analytico.com](mailto:pais.helpdesk@analytico.com)

## Our organisation

Analytico is an international laboratory organisation consisting of three specialised autonomous divisions. We serve our customers with laboratory research in the fields of environment, pharmaceuticals, health care and nutrition.

Analytico is part of the listed Eurofins; with over 50 laboratories it is one of the leading laboratory organisations in the world. This global network of laboratories and offices combined with PAIS 4U2 ensures that you will always have a laboratory practically just around the corner. The staff at Analytico make it their task to provide certainty on the measurable factors which could contribute to the well-being of man.

Analytico has distinguished itself through a high degree of efficiency, which is realised through optimal logistics, flexible planning and the application and development of state-of-the-art technologies. The development of PAIS 4U2 represents a further optimisation of our service. Install PAIS 4U2, like others have done, and experience the ease and time-saving which the program will offer you and your organisation.

## CORE DATA



- Fifty laboratories world-wide
- Listed on the Paris and Frankfurt stock exchanges
- Leader in global laboratory research
- More than 20,000 customers
- Over 2,000 employees

## HEADQUARTERS

Bergschot 71  
4817 PA Breda  
P.O. Box 5510 4801 DM Breda  
The Netherlands  
Phone +31 (0)76 573 73 73  
Fax +31 (0)76 573 77 77

## BRANCHES

### Analytico Milieu B.V.

Gildeweg 44-46  
3771 NB Barneveld  
P.O. Box 459 3770 AL Barneveld  
The Netherlands  
Phone +31 (0)342 42 63 00  
Fax +31 (0)342 42 63 99

### Analytico Milieu N.V.

Fotografielaan 43  
B-2610 Antwerpen  
Belgium  
Phone +32 (0)3 827 51 11  
Fax +32 (0)3 827 98 32

### Analytico France

4 rue Volta  
F-94140 Alfortville  
France  
Phone +33 (0)1 43 68 00 68  
Fax +33 (0)1 49 77 55 95

### Analytico Food B.V.

Leeuwarderstraatweg 129  
8441 PK Heerenveen  
P.O. Box 766 8440 AT Heerenveen  
The Netherlands  
Phone +31 (0)51 367 22 99  
Fax +31 (0)51 367 22 60

### Analytico Medinet B.V.

Bergschot 71  
4817 PA Breda  
P.O. Box 5510 4801 DM Breda  
The Netherlands  
Phone +31 (0)76 573 73 73  
Fax +31 (0)76 573 77 77

[info@analytico.com](mailto:info@analytico.com)  
[www.analytico.com](http://www.analytico.com)

## CORPORATE HEADQUARTERS

### Eurofins Scientific Services

Chaussée de Malines 455  
B-1950 Kraainem  
Phone +32 (0)2 766 16 20  
Fax +32 (0)2 766 16 39

[EurofinsBE@eurofins.com](mailto:EurofinsBE@eurofins.com)  
[www.eurofins.com](http://www.eurofins.com)

FOR THE CHEMISTRY OF LIFE

Maintenance verification

Selection

Material:  Select criteria:

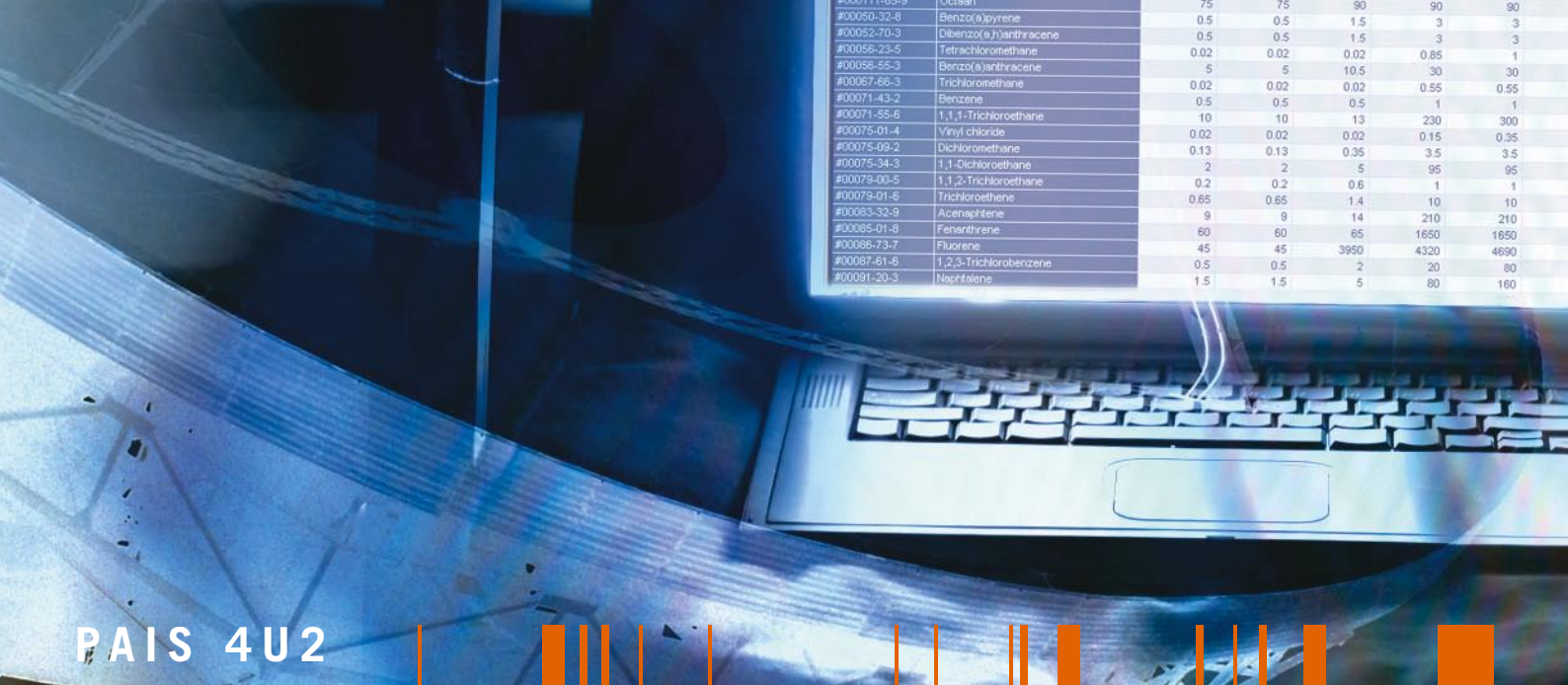
Sample type:

Parameter code	Parameter	WD_8871_Tekst	WD_8872_Tekst	WD_8873_Tekst	WD_8874_Tekst	WD_8875_Tekst	REACTIE
#000110-45-5	Hexaan	1	1	1	6.5	10	
#000111-85-9	Octaan	75	75	90	90	90	
#00050-32-8	Benzol(Moyleme)	0.5	0.5	1.5	3	3	
#00052-78-3	Dichloro(1,2)trichlorene	0.5	0.5	1.5	3	3	
#00052-22-5	Tetrachloroethene	0.02	0.02	0.02	0.85	1	
#00055-55-2	Benzol(a)anthracene	5	5	10.5	30	30	
#00067-66-3	Trichloromethane	0.02	0.02	0.02	0.55	0.55	
#00071-43-2	Benzene	0.5	0.5	0.5	1	1	
#00071-55-6	1,1,1-Trichloroethane	10	10	13	230	300	
#00075-01-4	Vinyl chloride	0.02	0.02	0.02	0.15	0.35	
#00075-09-2	Dichloromethane	0.13	0.13	0.35	3.5	3.5	
#00075-34-3	1,1-Dichloroethane	2	2	5	95	95	
#00079-00-5	1,1,2-Trichloroethane	0.2	0.2	0.6	1	1	
#00079-01-8	Trichloroethene	0.65	0.65	1.4	10	10	
#00083-32-9	Acetophenone	9	9	14	210	210	
#00085-01-8	Fluorene	60	60	65	1650	1650	
#00085-73-7	Fluorene	45	45	3950	4320	4650	
#00087-81-6	1,2,3-Trichlorobenzene	0.5	0.5	2	20	20	
#00091-20-3	Nichtale	1.5	1.5	5	80	160	



PAIS 4U2





## PAIS 4U2

The very latest generation of Analytico's laboratory communication system, PAIS 4U2 is a unique software program for multifunctional, fast and safe communication between the laboratories of Analytico and its customers. PAIS 4U2 is provided free to the customers of Analytico within the environment and food sectors. PAIS 4U2 will save you time, money and contribute to making your organisation even more professional.

## What is PAIS 4U2?

PAIS is short for Professional Analytico Information System. This program has already been used successfully for several years by hundreds of Analytico customers. The new PAIS 4U2 is the successor of PAIS 4U and offers the user many new and unique features.

### PAIS 4U2 LETS YOU:

- register orders for laboratory work;
- receive your analysis results in digital format, allowing you to incorporate them directly into your own research report. Furthermore, the official analysis certificate will be presented as a full-colour PDF file with watermark;
- receive chromatograms in digital format;
- export data to Word and Excel, with the option to convert files into XML/XSL. This allows you to easily adapt the report to the layout of your choose and requirements;
- data exchange through, among others, the SIKB and IBD exchange formats;
- follow the progress of your projects directly in the laboratory;

- PAIS 4U2 offers direct insight into Analytico's Laboratory Information Management System (LIMS);
- display cost specifications, providing you with an indication of the fee for the required analysis prior to issuing an order;
  - consult the analysis standard and analysis method according to which the desired analysis is carried out;
  - display specifications on analysis packages which consist of several analyses;
  - link results to a measurement point, to allow the following of trends over time;
  - order packaging material;
  - test the analysis results for compatibility with national and international target and standard values;
  - test the analysis results for compatibility with specific business-own standard values;
  - order an Analytico courier to collect your samples.

# How do I lower the chain costs of my

## PAIS 4U2

PAIS 4U2 is the newest generation of our PAIS system. The unique advantages and communication possibilities of PAIS 4U2 leave other electronic communication systems in the field of laboratory equipment far behind.

### Why choose PAIS 4U2?

#### COMPETITIVE ADVANTAGE

The PAIS server is in direct contact with the LIMS server of Analytico. This gives you open, real-time insight into the activities in the laboratory and into the progress of your order. The status can be followed on-line on a project, sample and result level, allowing you to get (partial) results immediately after validation by the laboratory, before the whole project is completed. This in turn lets you provide your customers with advice faster, thereby improving your position in the market.

#### TIME-SAVING

PAIS 4U2 uses the Flashfiler2™ database. This technology is superior to working with among others Paradox files, especially in multi-user network applications. The possibility of using templates and a

favourites menu saves you searching and time when creating your analysis orders.

Moreover, PAIS 4U2 has an extensive search and selection function, which lets you easily retrieve the project, the order and the sample of interest.

PAIS 4U2 supports data exchange with program modules used in fieldwork programs, such as 'Boormanager' and 'Jess Systems 2000' (Environment). The PAIS-XML format makes it possible that information regarding orders and results can be exchanged between various users. PAIS 4U2 further supports the SIKB-XML format, allowing for data exchange with various GIS and BIS systems.

#### FLEXIBILITY

The design of the program facilitates communication with virtually all transfer protocols, such as HTTP, FTP, MAPI, SMTP/



# projects? ..... PAIS 4U2!

POP, etc.. This means that PAIS 4U2 can be used for communication through the Internet, e-mail or the website of Analytico.

## INTERNATIONAL POSSIBILITIES

PAIS 4U2 can be received in your pre-specified language. PAIS 4U2 currently supports Dutch, English, French, Spanish and Swedish. This means that orders, tests, certificates, etc., are depicted in the previously selected language, providing you with additional advantages for your international projects or the exchange of project data with branches your business may have abroad.

## RELIABILITY

Extra attention has been given to the system's safety and protection. Access to the PAIS server is protected by a solid log-in procedure. Each customer receives a specific, personal customer code and password. This information needs to be entered once in the PAIS client module in order to connect to the PAIS server. Results and certificates additionally are sent in encrypted XML. All these safety measures ensure that the customer has access only to his own projects and results.

The program design further ensures a stable communication between the system of the customer and Analytico, which optimises the reliability and availability of the program.

## UP-TO-DATE PRICE INFORMATION

PAIS 4U2 contains all the price information necessary for providing you in advance an indication of the fees for a specific analysis. The available fees are based on your current specific price agreements with Analytico. By creating a test order, you can display a cost specification, allowing you to prepare an advance cost estimate for a particular order. This will save you time when preparing and calculating offers for your customers and also prevents you from having to do

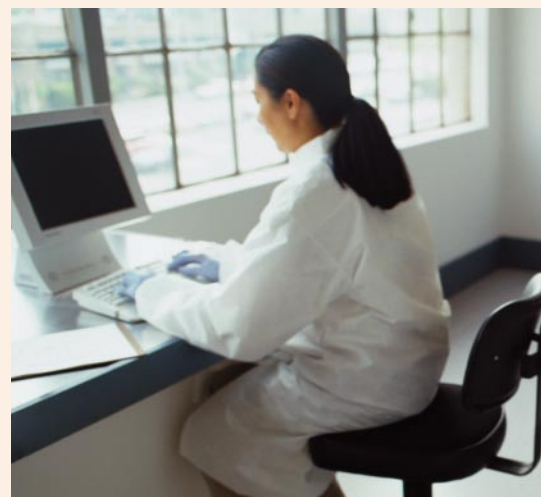
additional searching and calculation work, which usually costs time needlessly when having to use different price lists.

## ON-LINE PRODUCT INFORMATION

Background information on the analyses and determinations that Analytico can conduct for you is instantly available in PAIS 4U2. At present, the analysis method applied and the standard (NEN, ISO, CMA, etc.) is depicted for each determination. Furthermore, exact and detailed specifications of the various analysis packages can be displayed. In future, Analytico will constantly expand the amount of the available analysis information in PAIS 4U2. Take for instance the indication of the quickest possible delivery time, the accreditation and the required packaging.

## CONVENIENCE

With PAIS 4U2, we offer you a laboratory communication system, which supports the complete logistical connection between Analytico and its customers. In the near future, it will even be possible to expand the program with a digital invoicing system and other features. Updates of the program



components will be sent automatically through the PAIS server to all registered users. This procedure prevents error-prone and time-consuming operations, and ensures that you will always be working with the most recent PAIS version.

The logical design of the program and the Windows-like menu structure makes PAIS 4U2 easy to use, even making it possible for people who have never worked with the program to get quickly started.

